

KOH YOUNG TECHNOLOGY

Disclaimer

This presentation has been prepared by Koh Young Technology and although the information provided comes from credible sources, Koh Young Technology is not responsible for its accuracy.

These figures are subject to change without prior notice, and Koh Young Technology is neither obligated to provide revisions caused by changes regarding the projection and forecast presented in this presentation. Koh Young Technology accepts no liability for any loss and this presentation cannot be used in any legal matter.

This presentation should not be copied, distributed, sent or changed except the written consent of Koh Young Technology.

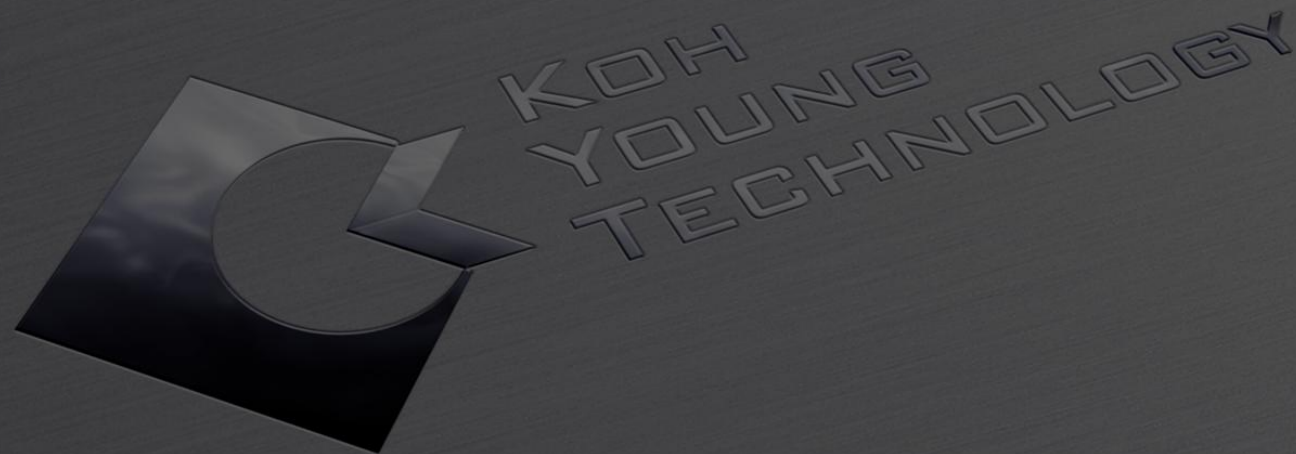
Business Domain



MEDICAL



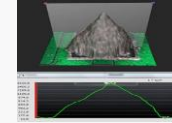
INDUSTRIAL



INDUSTRIAL

SMT Process

Crating the 3D SPI Market



Inspection

Printer

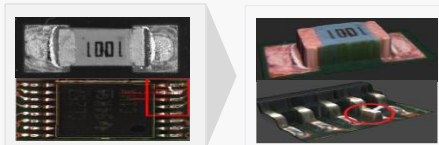
3D SPI

Mounter

3D AOI

Reflow Oven

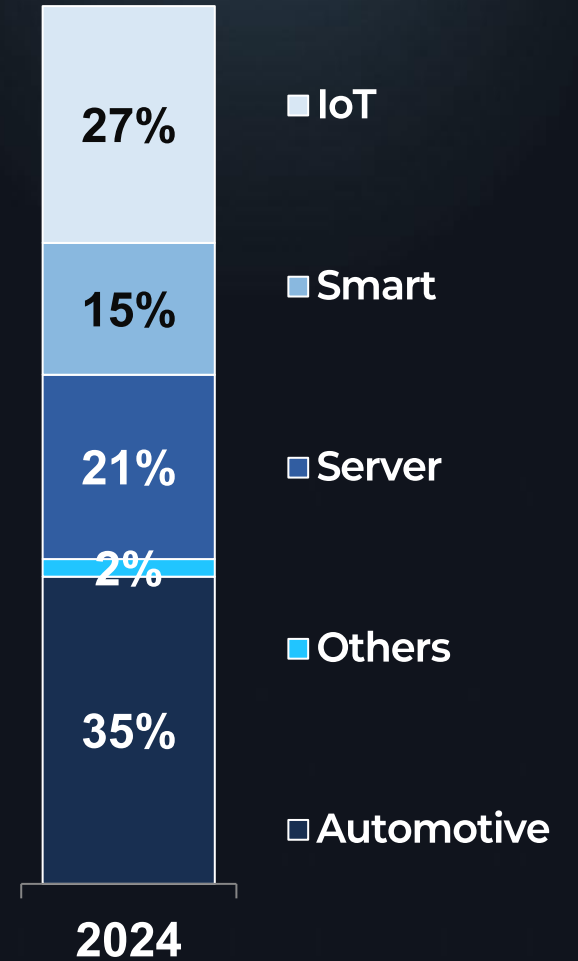
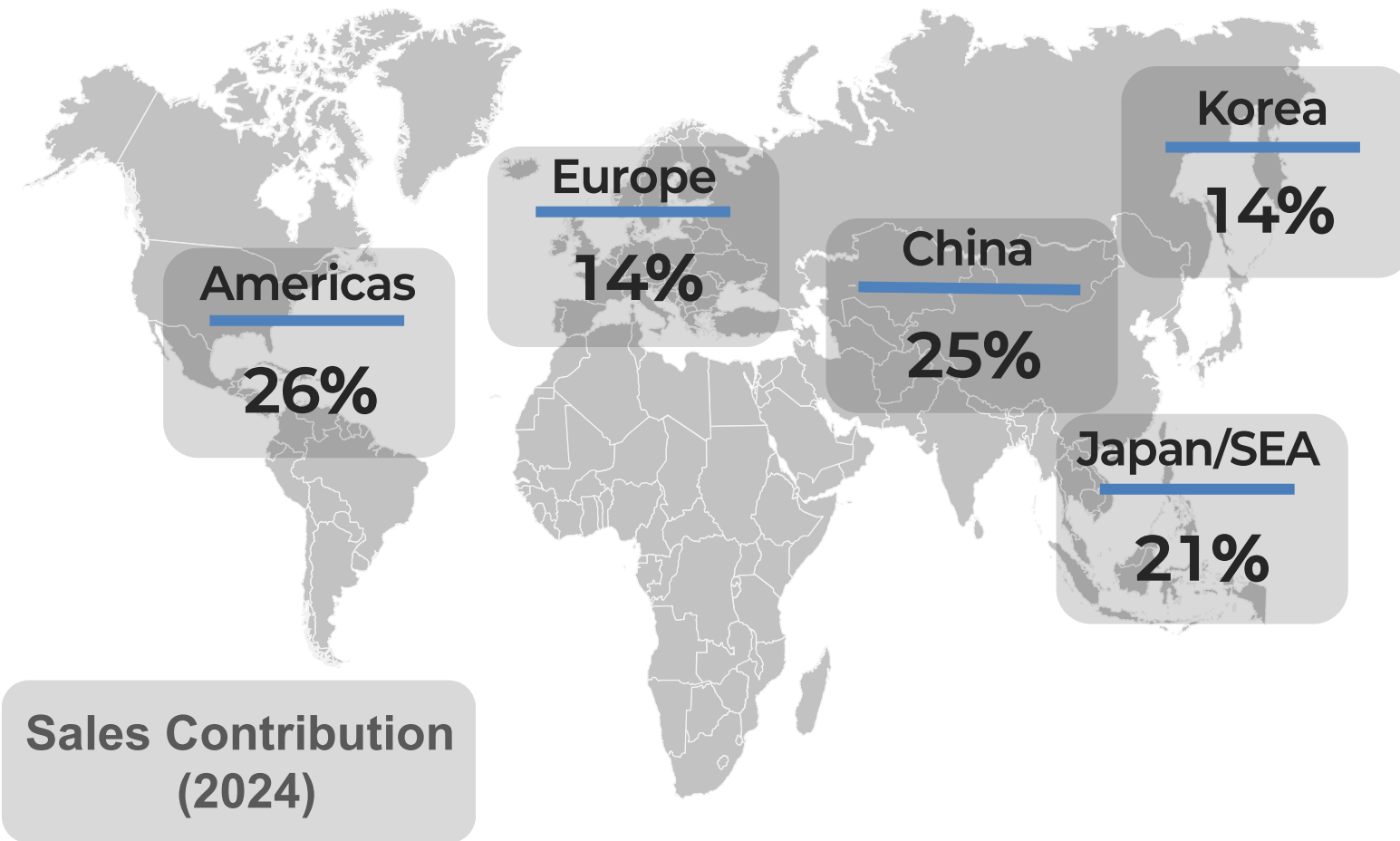
3D AOI



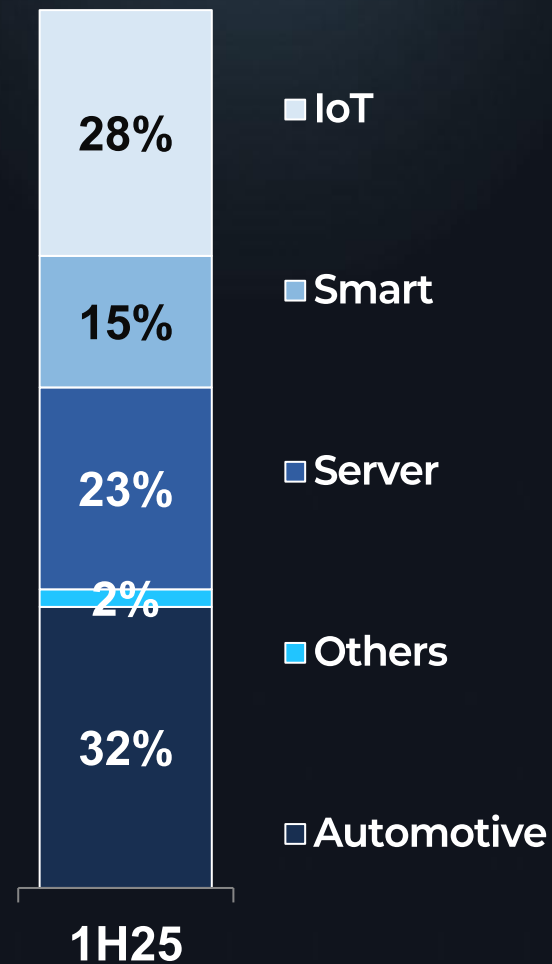
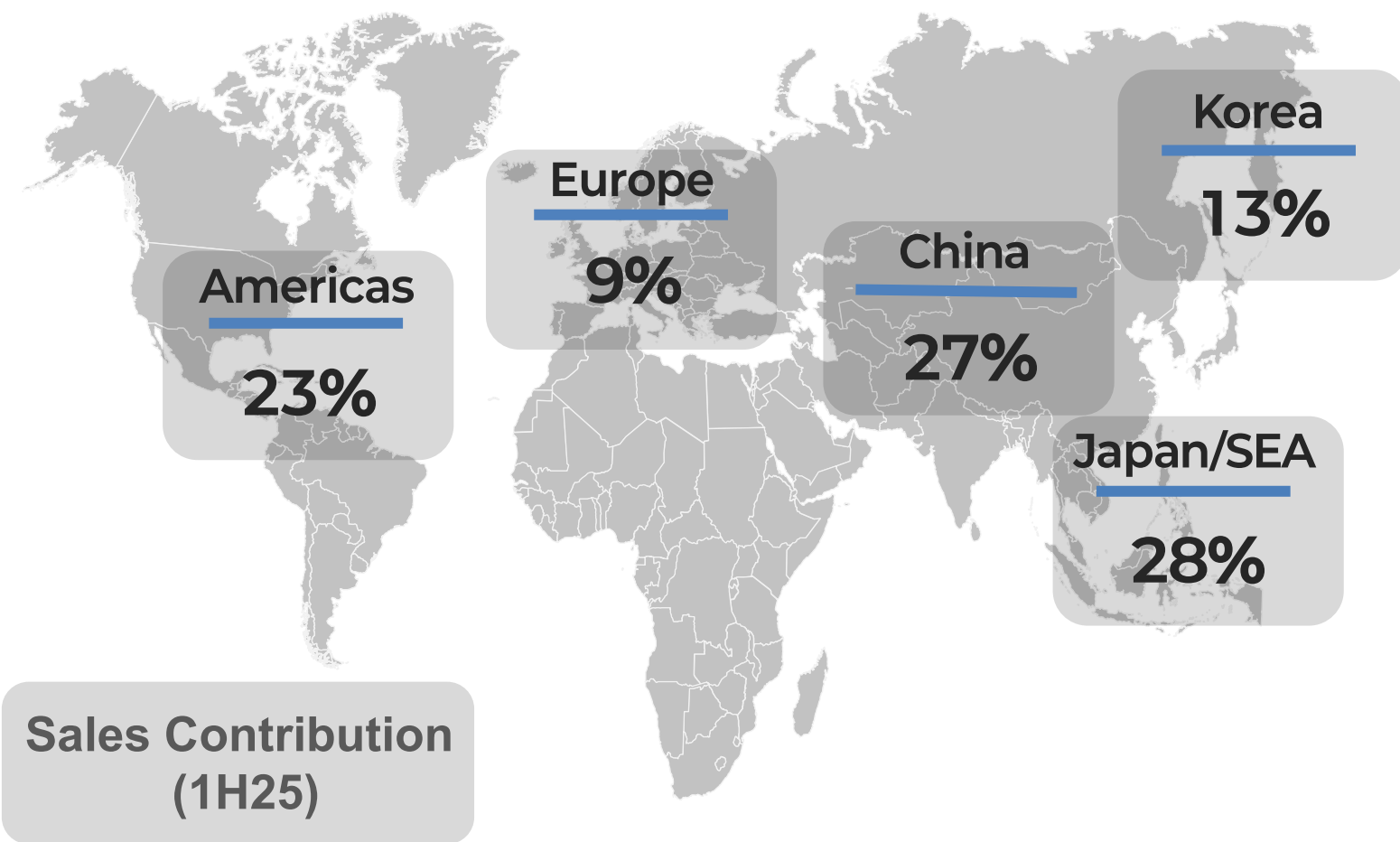
Reorganizing the 2D AOI Market into a 3D AOI Market

Technology Leadership thru Innovation

Sales Contribution by Region / Industry



Sales Contribution by Region / Industry



SMT Manufacturing Process (Backend)

Perfecting the **Final Step** for Guaranteed Quality



Connector
Assy.



API

Automated Pin Inspection

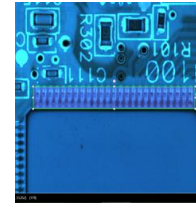


Semiconductor
Underfill



DPI

Dispensing Process Inspection



Conformal
Coating



DPI

Dispensing Process Inspection



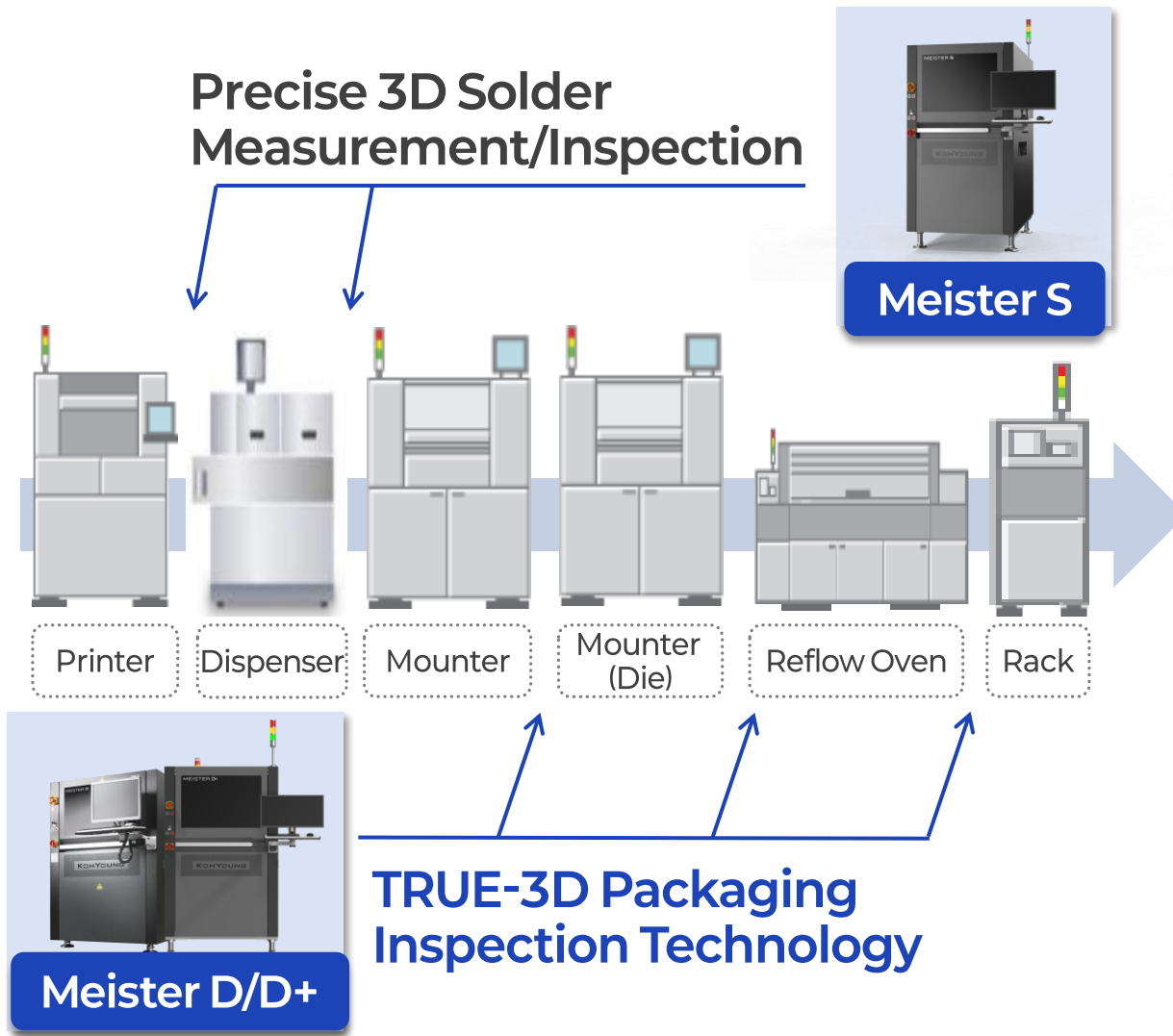
Final
Assembly



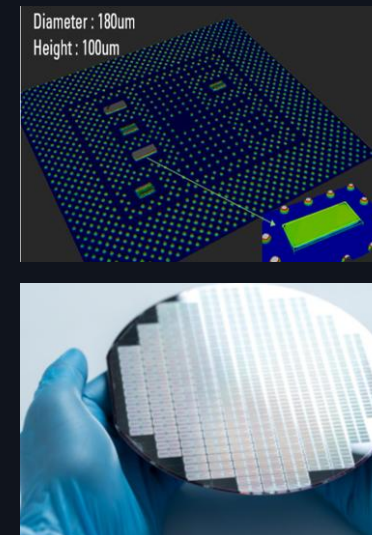
MOI

Multi-purpose Optical Inspection

SEMI Packaging Inspection



The world's 1st 3D Precision Solution
to measure and inspect Highly-Reflective Die
and Semi Parts Simultaneously



Smart Factory Platform



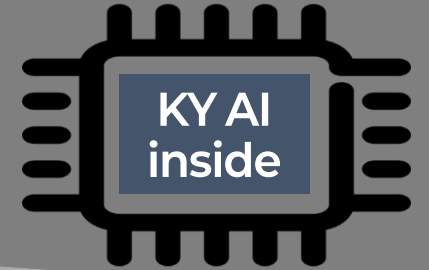
SPI & AOI
3D Innovation



Incomparable  Technologies

Measurement & Process Data

New SW Platform

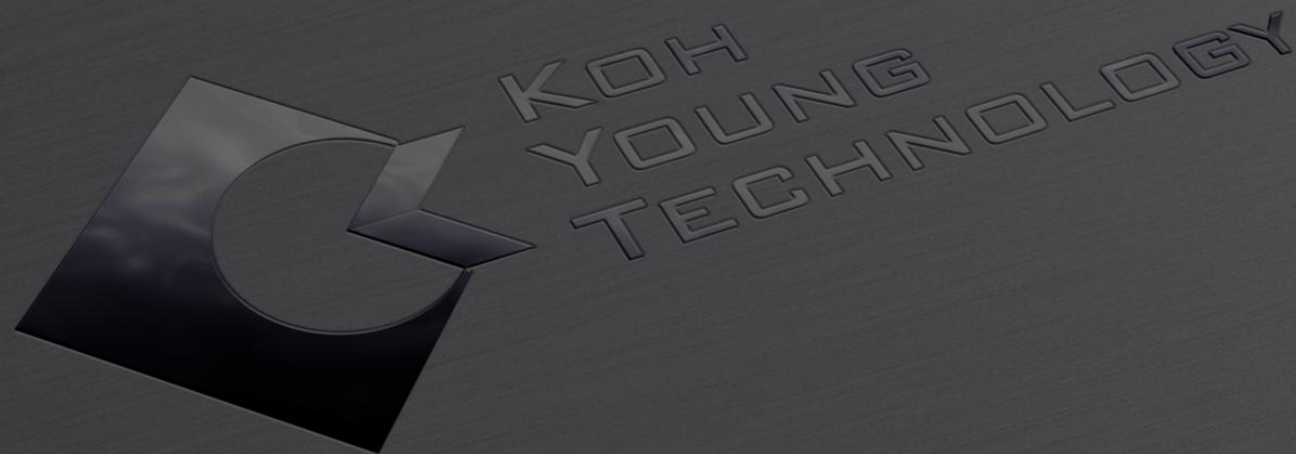


Process Monitoring

Process Diagnosis

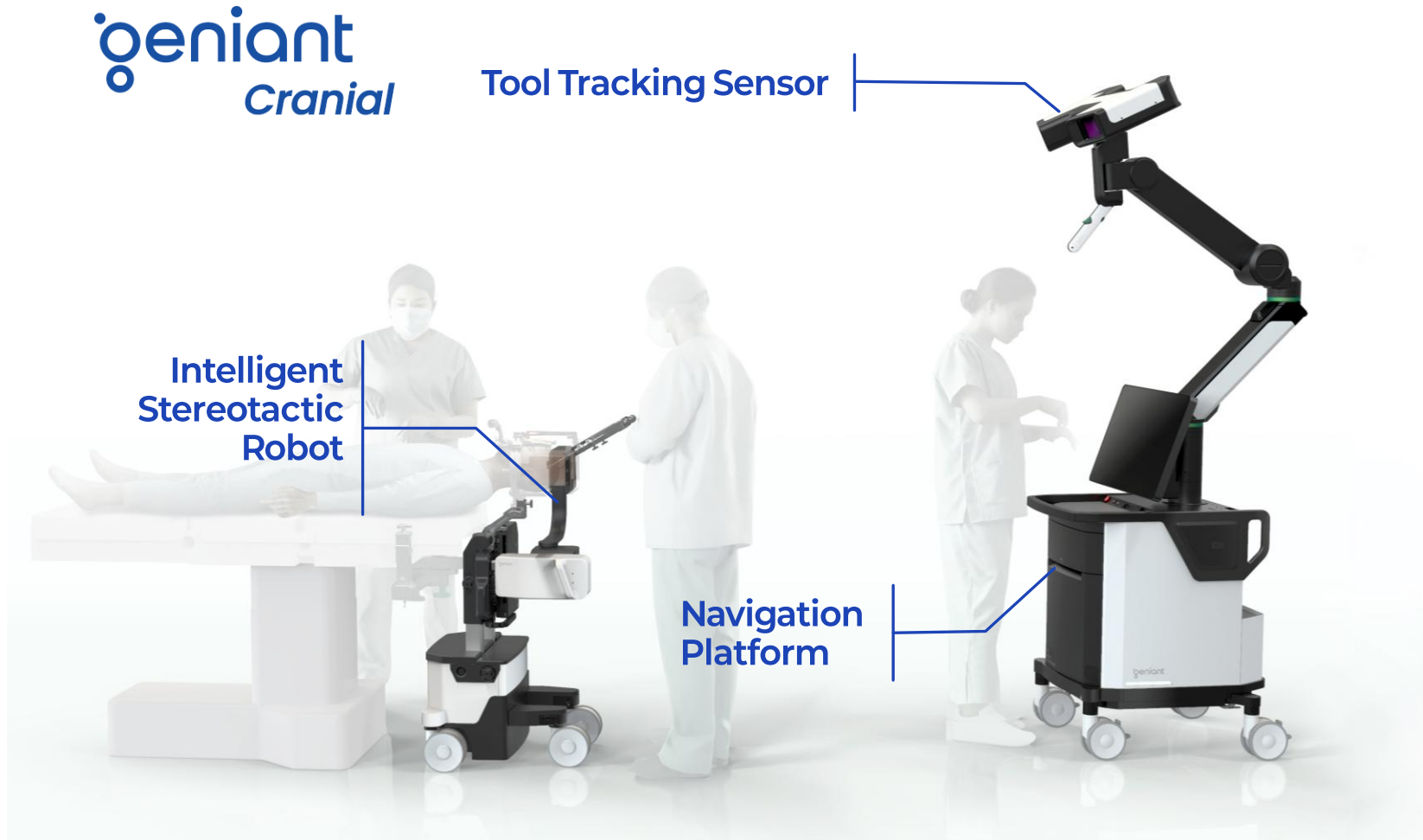
Process Analysis

Process Optimization



MEDICAL

Medical Robot for Brain Surgery



U.S. FDA
Clearance ('25.01)

Full-Scale
Global Market Entry

Indication

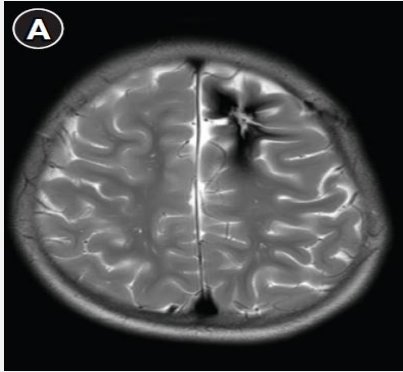


Diseases	Surgery
Epilepsy	SEEG
Parkinson's Diseases Essential Tremors OCD Psycho-path	DBS
Shunt	Shunt
Intracerebral hemorrhage Cerebral edema	Hematoma drainage
Tumor	Biopsy
CSF Diseases	Ommaya reservoir
Cerebral edema , Hemorrhage etc.	Stereotactic Navigation surgery

Workflow

Journey Map

Preoperative Phase



Trajectory Planning



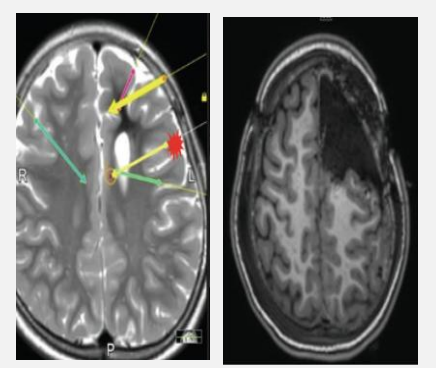
Intraoperative Phase



Electrode Insertion



Postoperative Phase



Preoperative Imaging
(MRI, CT)



Surgical Trajectory
Mapping



Automated
Intraoperative
Navigation & Real-
Time Tracking

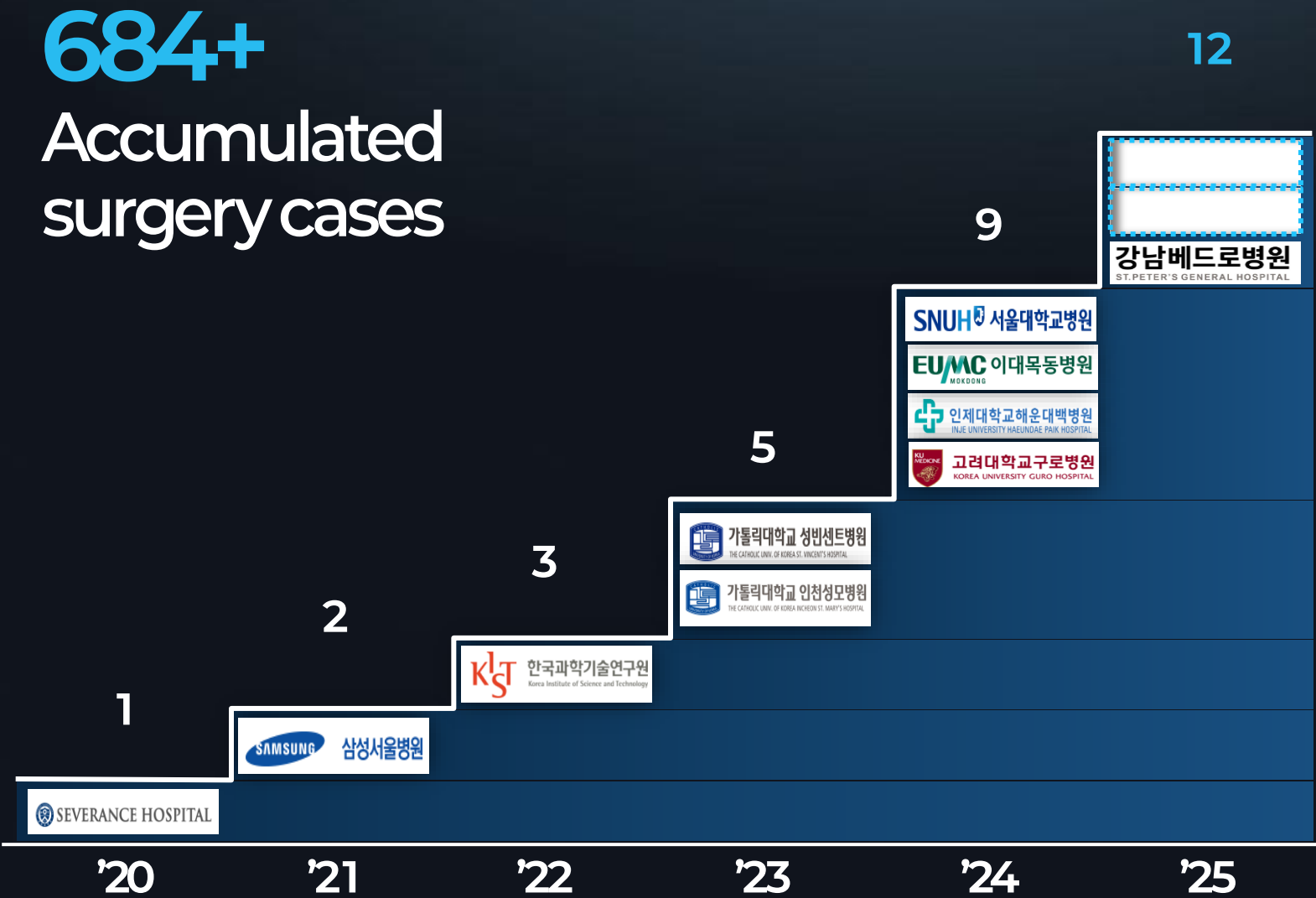


Robot-Guided
Electrode
Implantation



Postoperative Validation
(EEG, CT, Clinical
Assessment)

Implementation Status in Korea



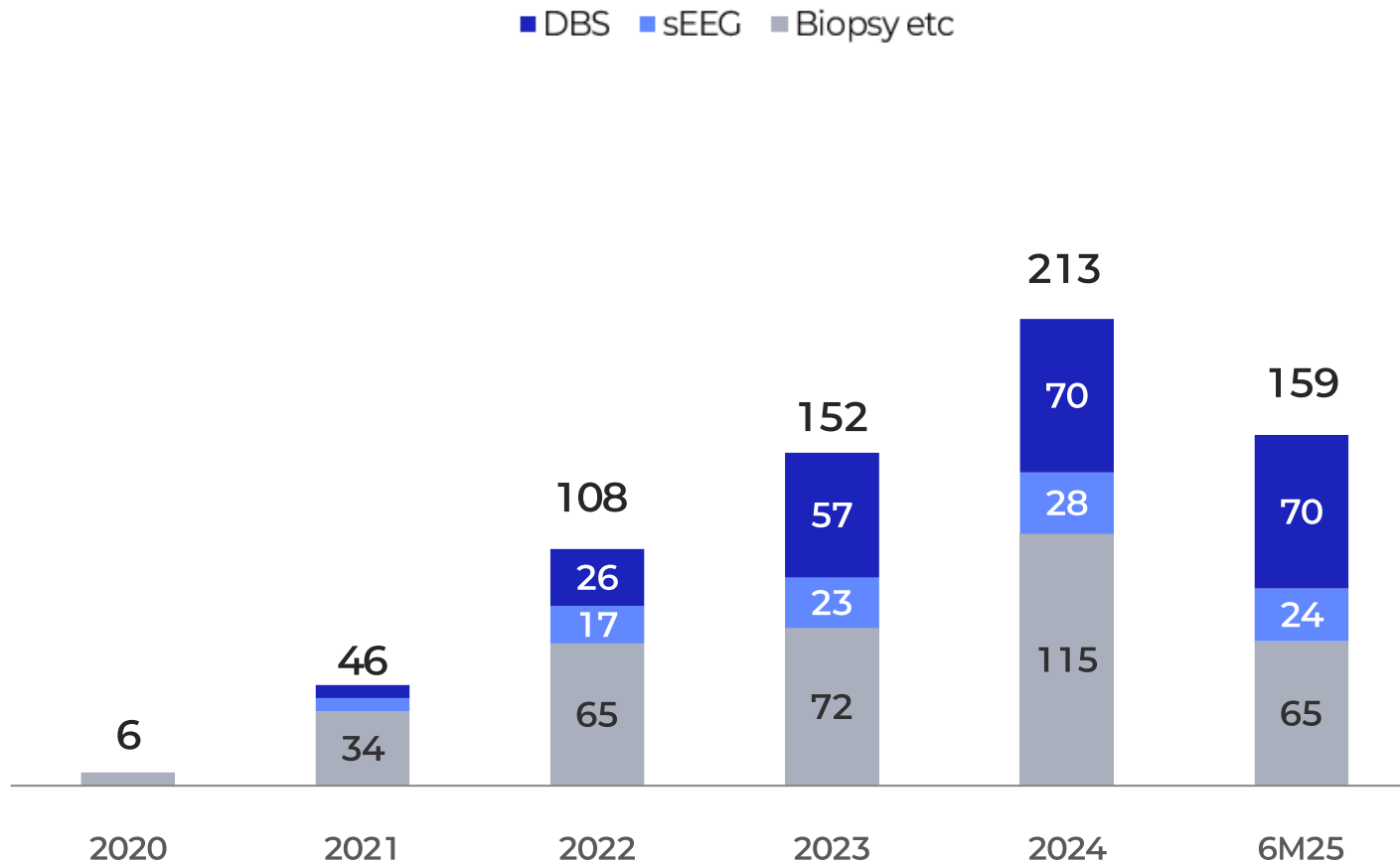
2nd Geniant Cranial Installation

Confirmed ('25.09)



Surgery cases

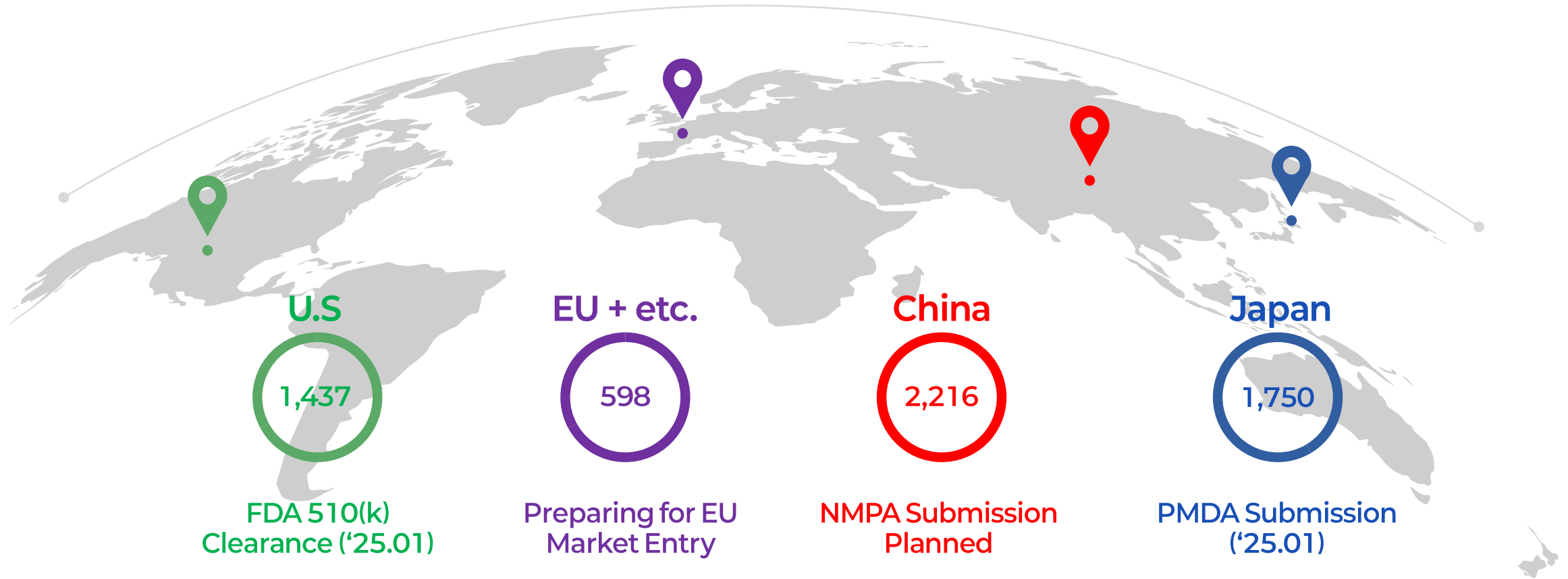
Brain Surgeries Using KYMERO (Unit: Case)



684 surgery cases

Securing robotic surgery
references for complex
brain surgeries such as
DBS, sEEG etc.

Major Market Expansion Plan



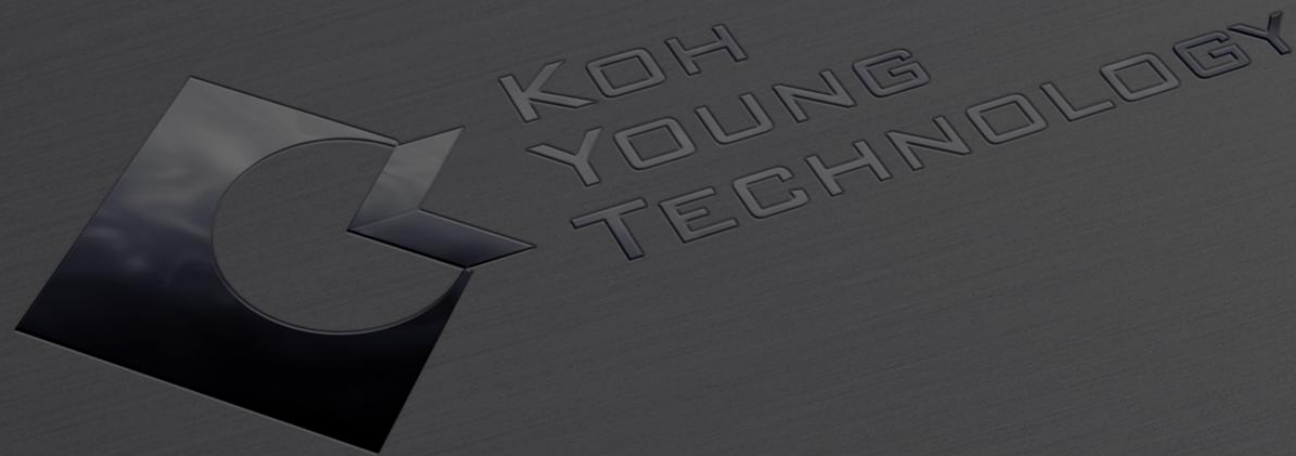
Total Addressable Market (# of Neurosurgery Hospitals)

Expansion of Medical Business Portfolio

Spine

Navigation

X-ray Imaging



Appendix

Consolidated Comprehensive Income Statement

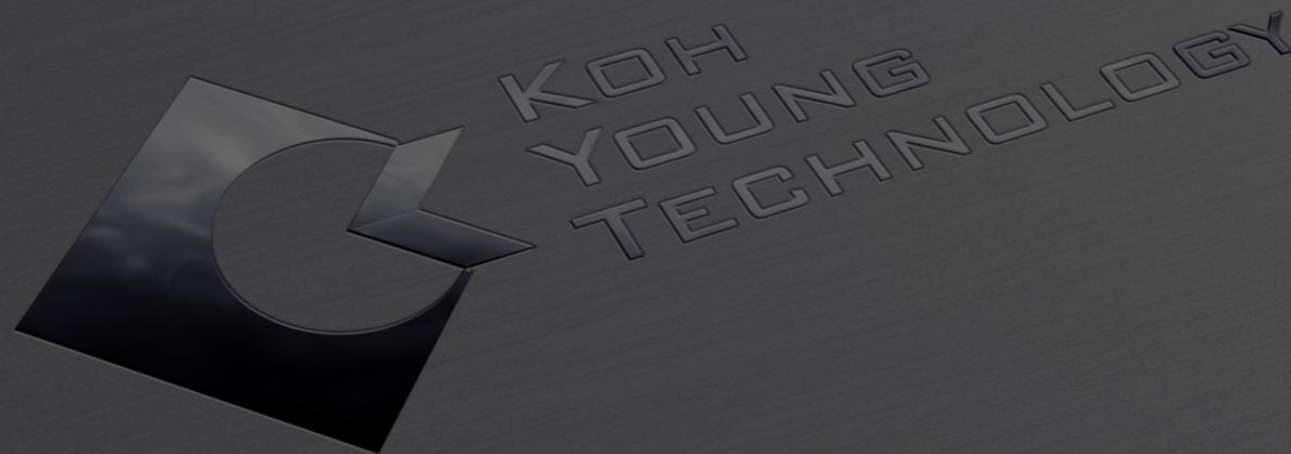


(Unit: KrW bn)	2Q23	3Q23	4Q23	1Q24	2Q24	3Q24	4Q24	1Q25	2Q25	FY23	FY24	1H25
Revenue	53.0	50.1	58.8	53.0	52.5	46.3	50.7	51.1	52.1	225.6	202.5	103.2
Cost of Sales	18.0	18.3	20.9	19.4	19.6	16.4	21.3	15.4	20.3	80.1	76.7	35.7
Gross Profit	34.9	31.8	37.9	33.6	32.8	29.9	29.5	35.7	31.8	145.5	125.9	67.5
SG&A Expenses	31.9	30.1	32.1	31.4	29.7	29.2	32.1	32.5	29.3	125.1	122.5	61.8
Operating Profit	3.1	1.8	5.8	2.2	3.2	0.7	-2.7	3.2	2.5	20.4	3.3	5.7
Non-Operating Profit	3.8	3.9	-4.1	7.1	6.2	-6.4	17.9	1.7	-9.4	10.2	24.8	-7.6
Earnings before Tax	6.9	5.7	1.7	9.3	9.4	-5.7	15.2	4.9	-6.8	30.6	28.1	-1.9
Corporate Tax	3.0	1.7	0.1	2.0	2.0	-1.3	4.4	1.7	-2.1	8.7	7.1	-0.4
Net Income	3.9	3.9	1.6	7.3	7.3	-4.4	10.8	3.2	-4.7	21.9	21.0	-1.5

Consolidated Statement of Financial Position



(Unit: KrW bn)	2Q23	3Q23	4Q23	1Q24	2Q24	3Q24	4Q24	1Q25	2Q25
Total Assets	396.9	403.7	367.2	375.6	374.2	366.0	377.9	385.3	370.2
Current Assets	299.8	305.7	272.3	280.8	280.2	271.3	284.0	282.7	265.9
Non-Current Assets	97.1	98.1	94.9	94.9	93.9	94.7	93.9	102.6	104.3
Total Liabilities	82.0	84.5	61.9	70.6	59.9	55.8	54.8	70.4	57.9
Current Liabilities	53.5	56.2	39.8	49.1	38.7	34.3	36.1	47.4	35.3
Non-Current Liabilities	28.5	28.4	22.1	21.5	21.2	21.5	18.7	23.1	22.5
Total Shareholder's Equity	314.9	319.2	305.3	305.1	314.3	310.2	323.2	314.9	312.3
Capital Stock	6.9	6.9	6.9	6.9	6.9	6.9	6.9	6.9	6.9
Retained Earnings	282.3	286.2	288.3	286.4	293.8	289.4	299.2	293.1	288.4
Others	25.7	26.1	10.1	11.8	13.6	13.9	17.1	14.9	17.0



E.O.D