

KOH YOUNG TECHNOLOGY

Nomura NIFA 2025

Disclaimer

This presentation has been prepared by Koh Young Technology and although the information provided comes from credible sources, Koh Young Technology is not responsible for its accuracy.

These figures are subject to change without prior notice, and Koh Young Technology is neither obligated to provide revisions caused by changes regarding the projection and forecast presented in this presentation. Koh Young Technology accepts no liability for any loss and this presentation cannot be used in any legal matter.

This presentation should not be copied, distributed, sent or changed except the written consent of Koh Young Technology.

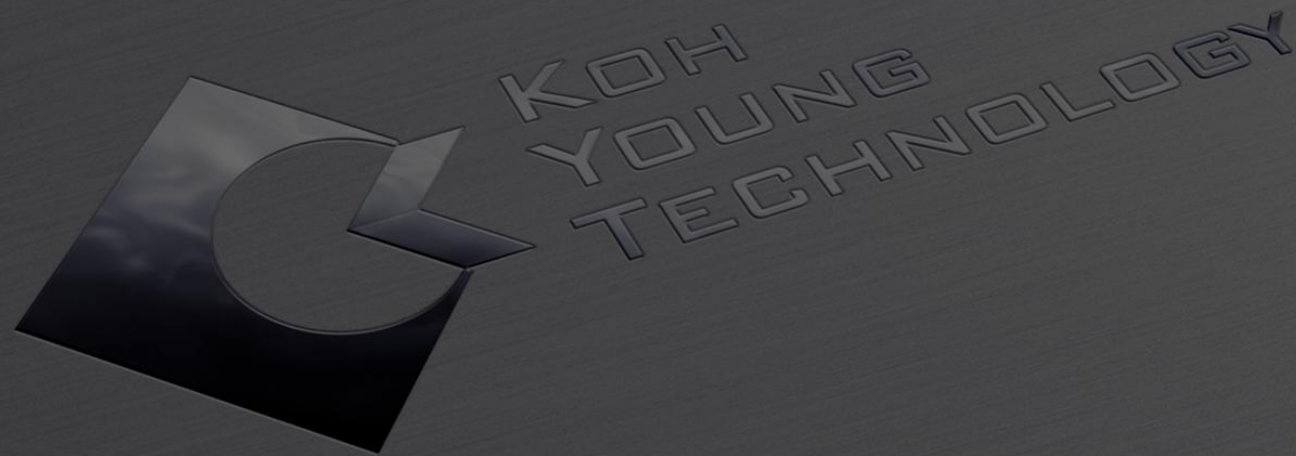
Business Domain



MEDICAL



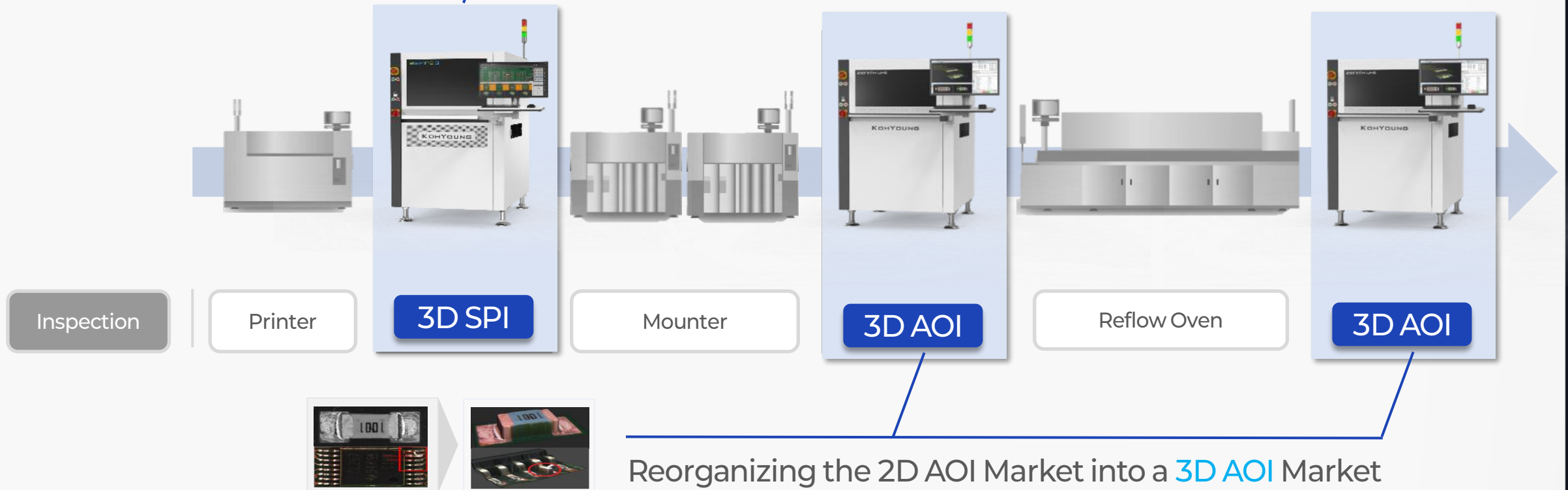
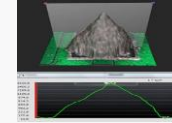
INDUSTRIAL



INDUSTRIAL

SMT Process

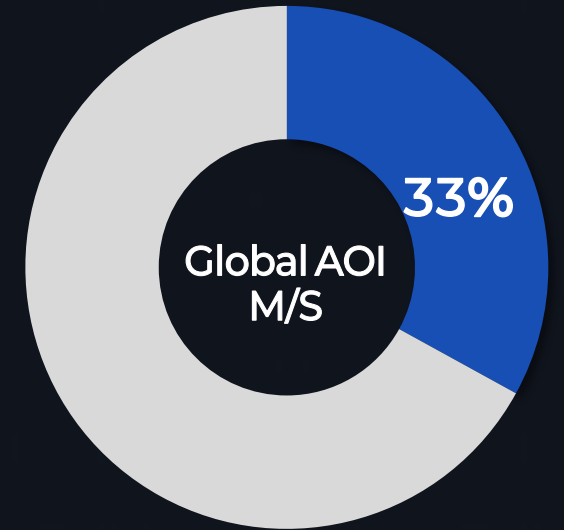
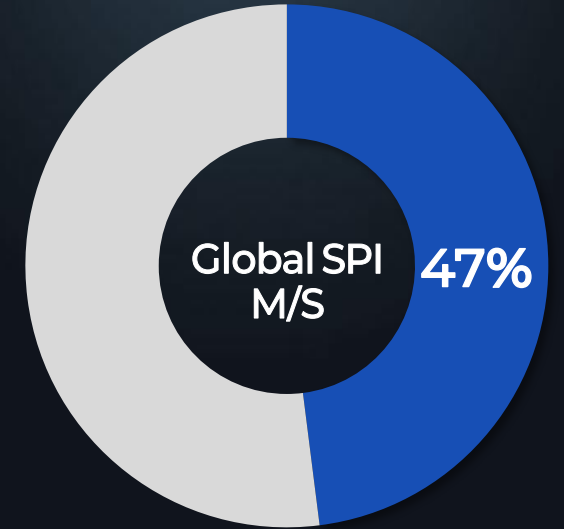
Crating the **3D SPI** Market



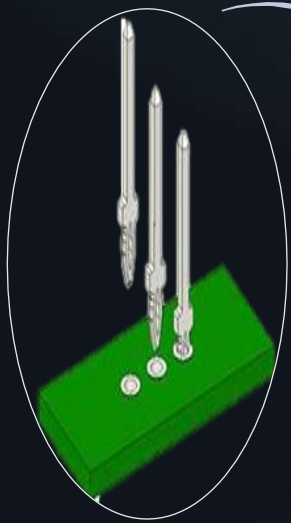
Reorganizing the 2D AOI Market into a **3D AOI** Market

Technology Leadership thru Innovation

Global M/S



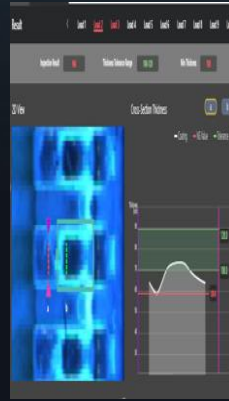
SMT Back-end Process



Connector
Assy.



3D API



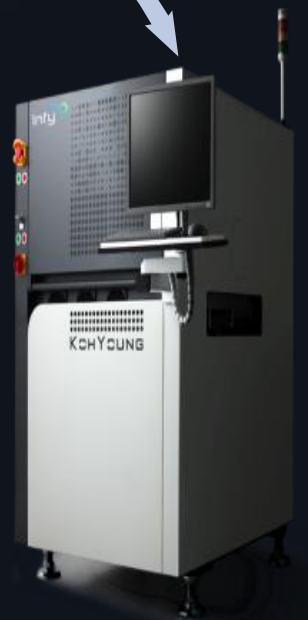
Conformal
Coating



3D DPI

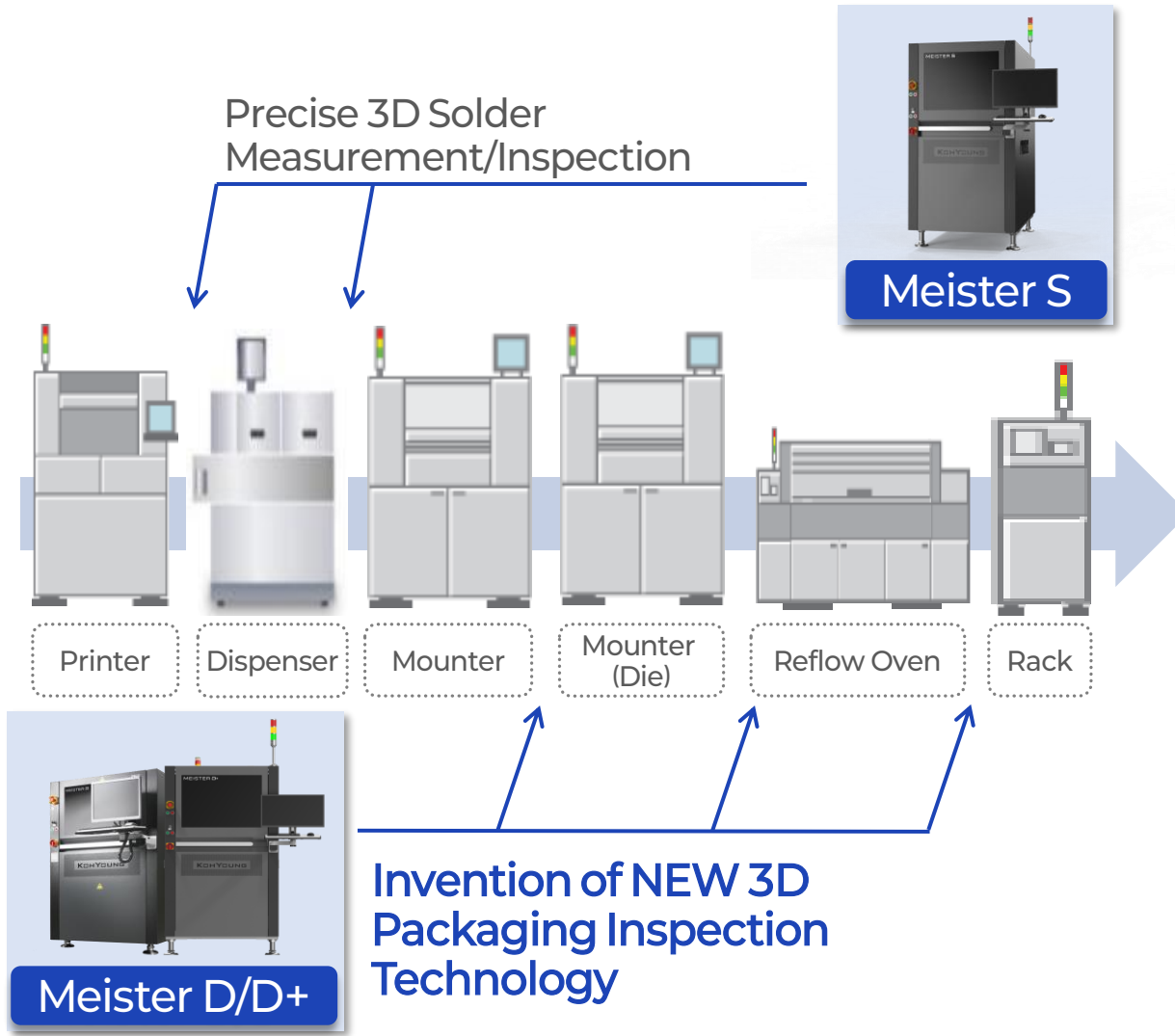


Final
Assembly



3D MOI

SEMI Packaging Inspection



The world's 1st 3D Precision Solution to measure and inspection
Highly-Reflective Die and Semi Parts Simultaneously



Focus on Taiwan

Koh Young Taiwan Branch

Sales
Specialist

Technical
Support

Marketing

Taiwan Branch to be Established

Semiconductor

Sales Specialist Hired

Targeting semiconductor and EMS

Customers in Taiwan

Smart Factory Platform



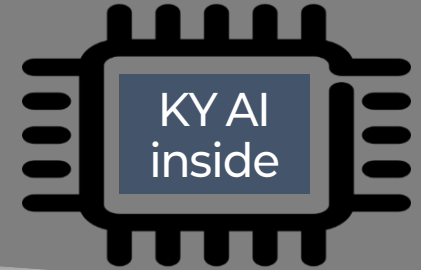
SPI & AOI
3D Innovation



Incomparable  Technologies

Measurement & Process Data

New SW Platform

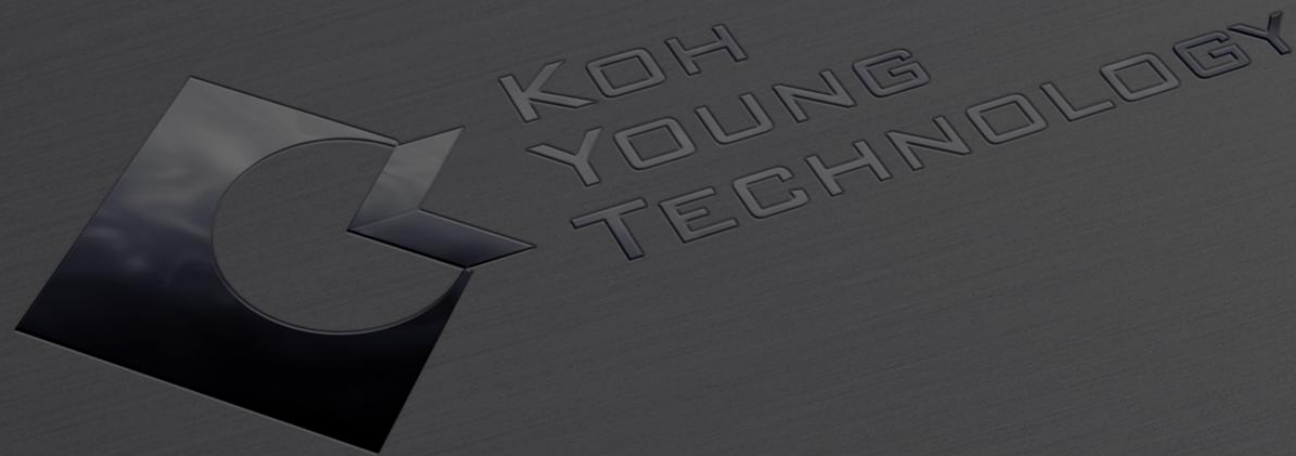


Process Monitoring

Process Diagnosis

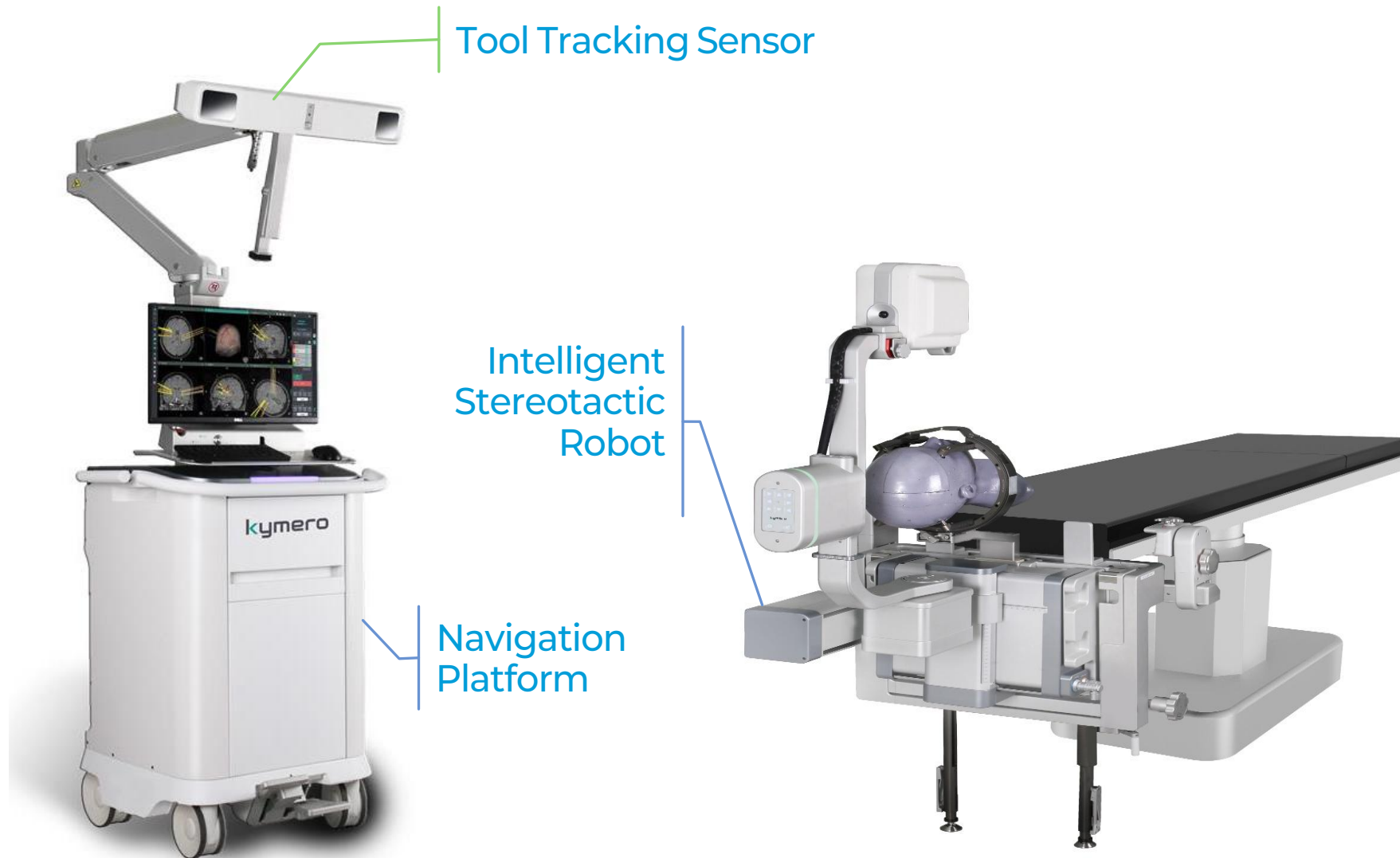
Process Analysis

Process Optimization



MEDICAL

Medical Robot for Brain Surgery



Indication

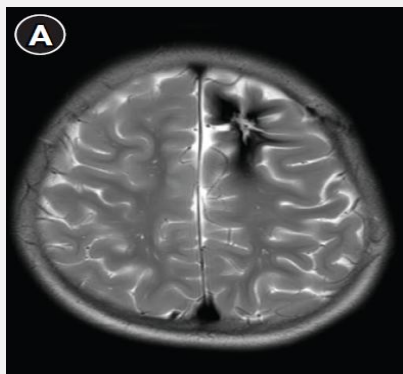


Diseases	Surgery
Epilepsy	SEEG
Parkinson's Diseases Essential Tremors OCD Psycho-path	DBS
Shunt	Shunt
Intracerebral hemorrhage Cerebral edema	Hematoma drainage
Tumor	Biopsy
CSF Diseases	Ommaya reservoir

Workflow

Journey Map

Preoperative Phase



Trajectory Planning



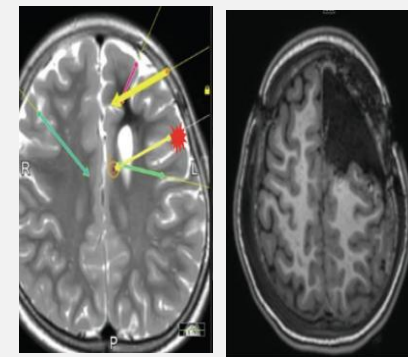
Intraoperative Phase



Electrode Insertion



Postoperative Phase



Preoperative Imaging
(MRI, CT)



Surgical Trajectory
Mapping



Automated
Intraoperative
Navigation &
Real-Time Tracking



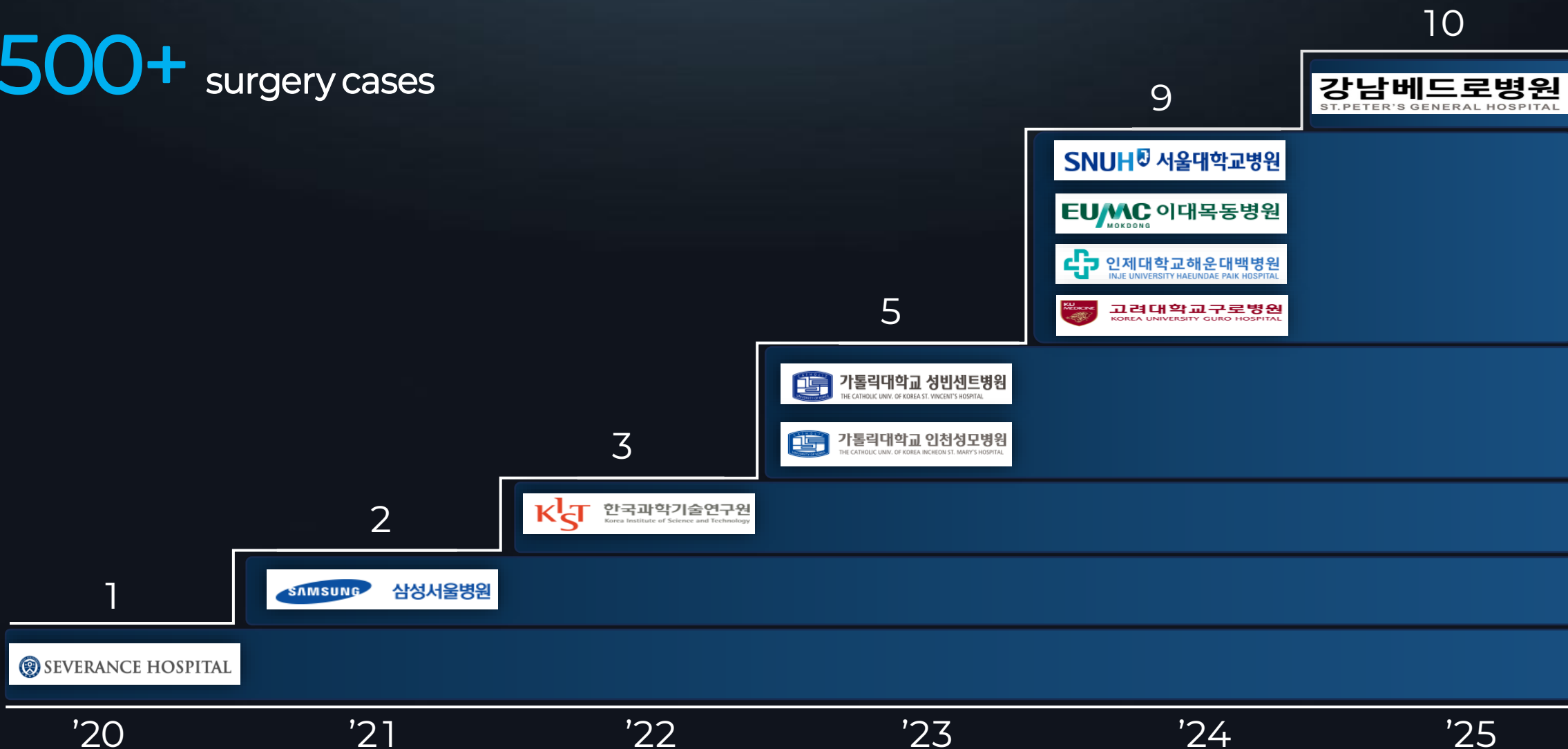
Robot-Guided
Electrode
Implantation



Postoperative
Validation (EEG, CT,
Clinical Assessment)

Implementation Status in Korea

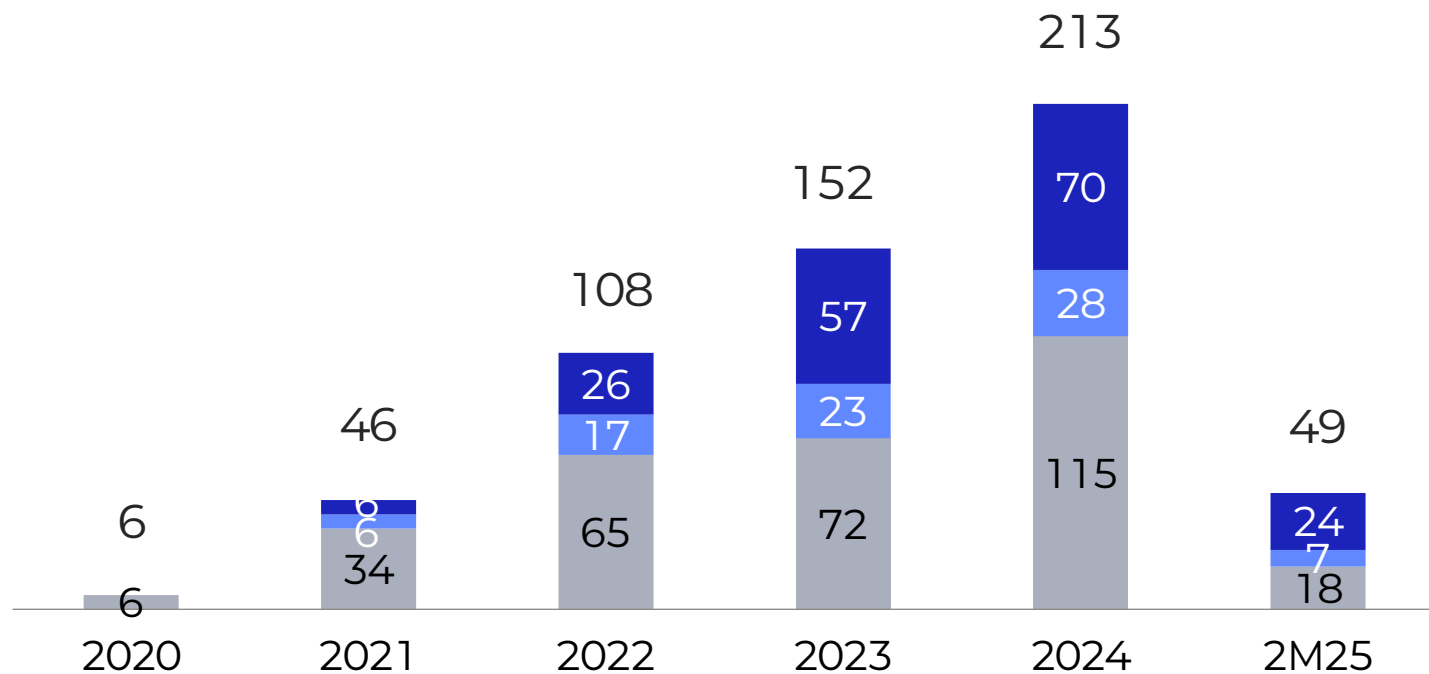
500+ surgery cases



Surgery cases

Brain Surgery cases using KYMERO (Unit: Case)

■ Biopsy etc ■ sEEG ■ DBS



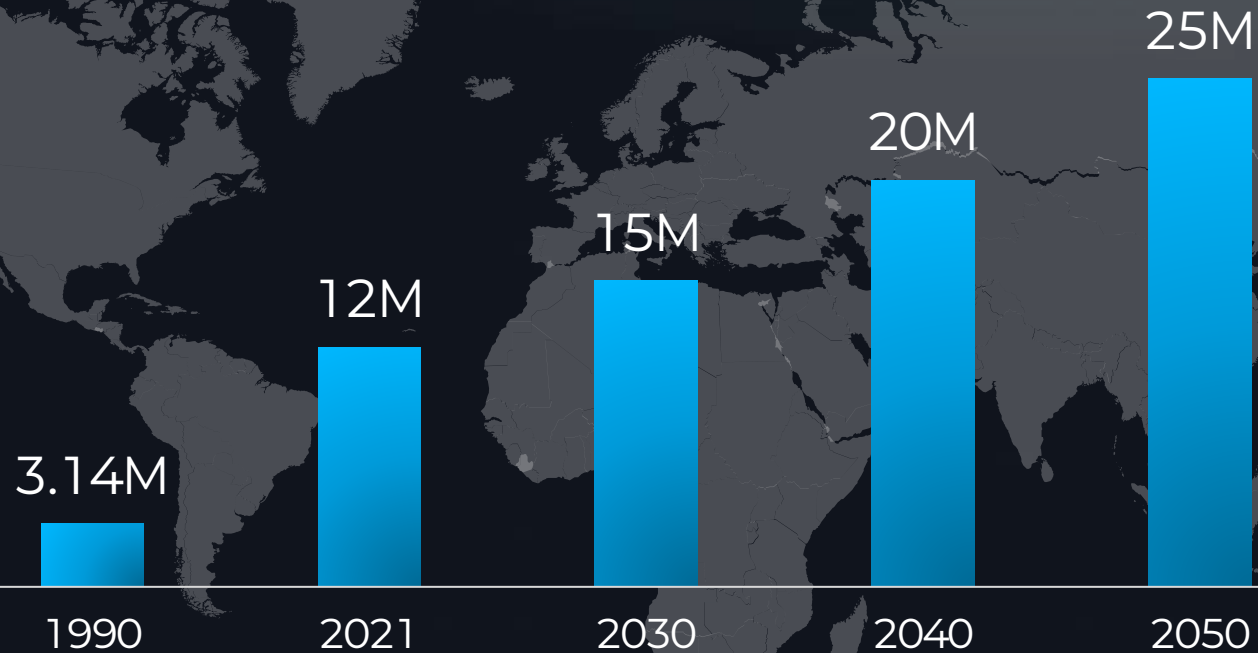
574 surgery cases

Securing robotic
surgery
references for complex
brain surgeries
such as DBS, sEEG etc.

Global Parkinson's Disease

Increase in Neurological Disorders

Aging Population Growth



■ Parkinson's Disease Patient Population

* Source: theBMJ, Projections for prevalence of Parkinson's disease

Parkinson's disease is the 2nd most common neurodegenerative disorder After Alzheimer's

The adoption of robotic surgery enhances the precision and stability of procedures such as DBS

Global Epilepsy Patient

Improved Diagnosis Rates

Aging Population Growth

3.4M

of Americans
have active epilepsy

6.5M

have active epilepsy globally

*"Approximately 50 million people worldwide live with epilepsy,
with around 10 million classified as active epilepsy"*

**Source: WHO, CDC*

50M epilepsy patients globally

About 20~30% have
drug-resistant epilepsy
requiring surgical treatment

The adoption of robotic surgery
is expected to drive
increased demand
for surgical interventions

Geniant Cranial

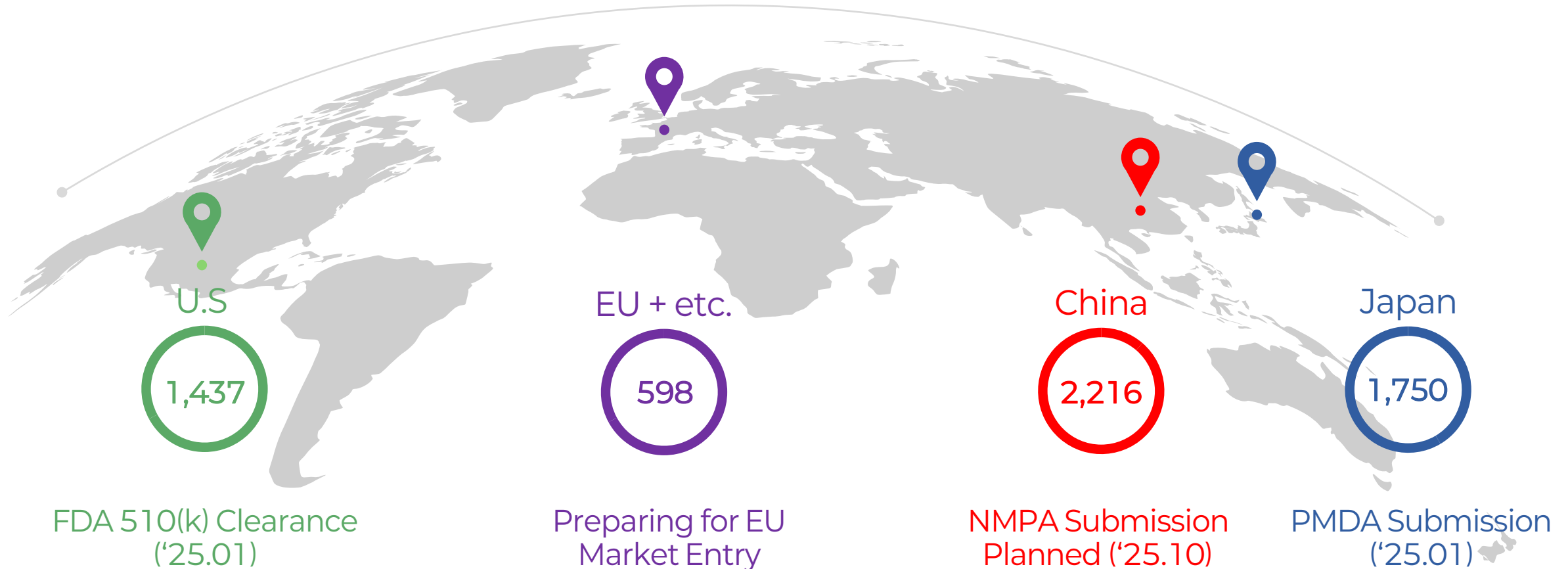
geniant
Cranial



US FDA 510(k)
Submission ('24.05)
Clearance ('25.01)

Go-to
Global Market

Major Market Expansion Plan



Total Addressable Market (# of Neurosurgery Hospitals)

U.S. Sales Network



U.S. Sales & Service
Center Set Up

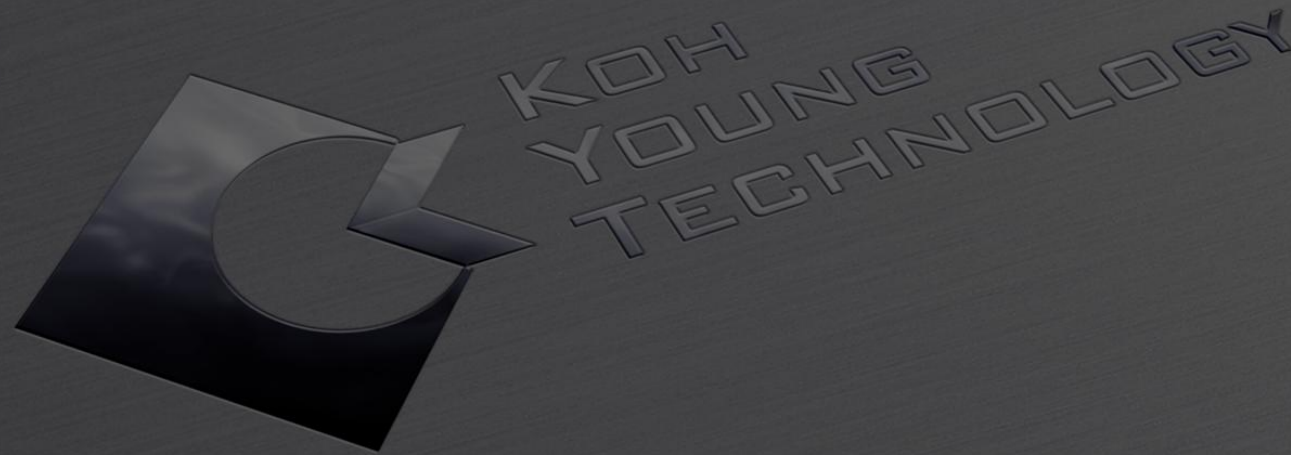
Ready for Sales
in the U.S.

Expansion of Medical Business

Spine

Navigation

X-ray Imaging



Financial Highlight

Consolidated Comprehensive Income Statement

(Unit: KrW bn)	1Q23	2Q23	3Q23	4Q23	1Q24	2Q24	3Q24	4Q24	1Q25	FY22	FY23	1Q25
Revenue	63.7	53.0	50.1	58.8	53.0	52.5	46.3	50.7	51.1	275.4	225.6	51.1
Cost of sales	22.9	18.0	18.3	20.9	19.4	19.6	16.4	21.3	15.4	98.7	80.1	15.4
Gross Profit	40.8	34.9	31.8	37.9	33.6	32.8	29.9	29.5	35.7	176.7	145.5	35.7
SG&A Expenses	31.1	31.9	30.1	32.1	31.4	29.7	29.2	32.1	32.5	132.4	125.1	32.5
Operating Profit	9.7	3.1	1.8	5.8	2.2	3.2	0.7	-2.7	3.2	44.3	20.4	3.2
Non-Operating Profit	6.6	3.8	3.9	-4.1	7.1	6.2	-6.4	17.9	1.7	6.2	10.2	1.7
Earnings before tax	16.4	6.9	5.7	1.7	9.3	9.4	-5.7	15.2	4.9	50.4	30.6	4.9
Corporate Tax	3.9	3.0	1.7	0.1	2.0	2.0	-1.3	4.4	1.7	11.1	8.7	1.7
Net Income	12.5	3.9	3.9	1.6	7.3	7.3	-4.4	10.8	3.2	39.3	21.9	3.2

Consolidated Statement of Financial Position

(Unit: KrW bn)	1Q23	2Q23	3Q23	4Q23	1Q24	2Q24	3Q24	4Q24	1Q25
Total Assets	403.2	396.9	403.7	367.2	375.6	374.2	366.0	377.9	385.3
Current Assets	295.0	299.8	305.7	272.3	280.8	280.2	271.3	284.0	282.7
Non-Current Assets	108.2	97.1	98.1	94.9	94.9	93.9	94.7	93.9	102.6
Total Liabilities	93.4	82.0	84.5	61.9	70.6	59.9	55.8	54.8	70.4
Current Liabilities	65.4	53.5	56.2	39.8	49.1	38.7	34.3	36.1	47.4
Non-Current Liabilities	28.0	28.5	28.4	22.1	21.5	21.2	21.5	18.7	23.1
Total Shareholders' Equity	309.8	314.9	319.2	305.3	305.1	314.3	310.2	323.2	385.3
Capital Stock	6.9	6.9	6.9	6.9	6.9	6.9	6.9	6.9	6.9
Retained Earnings	278.4	282.3	286.2	288.3	286.4	293.8	289.4	299.2	293.1
Others	24.5	25.7	26.1	10.1	11.8	13.6	13.9	17.1	14.9